

**Exclusive
investment
opportunity
in Antwerp**

**Churchill
Industrial Zone**



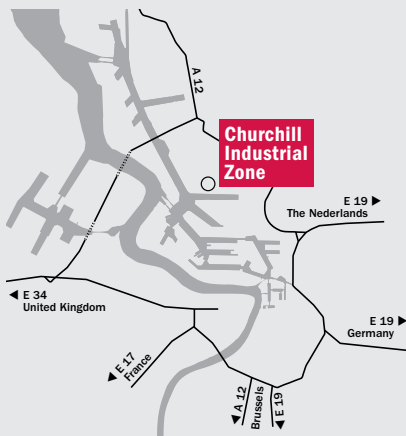
ANTWERP IN WESTERN EUROPE



ANTWERP IN BELGIUM



ANTWERP PORT AREA



In the heart of Europe

- ▶ Multifunctional, sustainable world port
- ▶ Maritime, industrial and logistic platform
- ▶ Crossroad European intermodal connections and pipelines
- ▶ Largest integrated (petro)chemical cluster of Europe
- ▶ For facts & figures:
www.portofantwerp.com/en/publications/brochures-maps/facts-figures-2017

We offer

- ▶ Unique investment opportunity
- ▶ Concession land as a whole or in parts
- ▶ Multipurpose site
- ▶ Middle of a developed industrial environment
- ▶ Potential interaction with other stakeholders
- ▶ Cluster enhancing opportunities
- ▶ Competitive advantage for new and existing companies
- ▶ Excellent multimodal access site
- ▶ Direct water access possible
- ▶ Guidance investment process –expertise– one stop shop

Churchill Industrial Zone

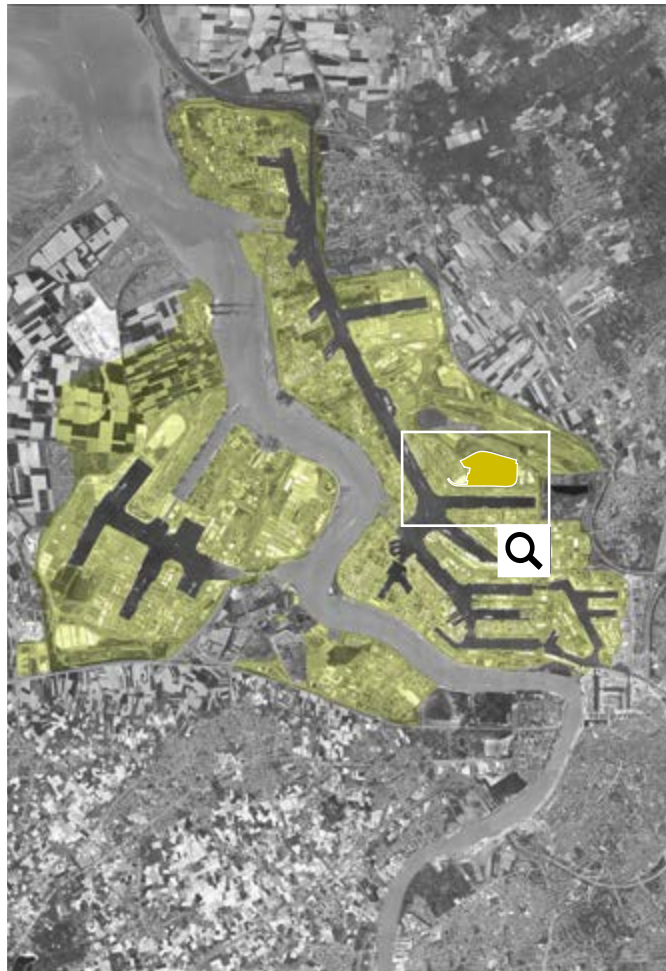
Unique, strategic location

For innovative, industrial project(s)

Approx 88 ha (217 acres)

Length approx. 1,100 m, width approx. 800 m

Central location port area – Churchill dock



ROAD ACCESS
Close to the ringroad
Direct access to European road network

PIPELINES ACCESS
Along the (concession) roads
Additional pipelines possible

RAIL ACCESS
Direct rail access to European rail network
Close to marshalling yard
Rail tracks on site

WATERSIDE ACCESS
Via the quays of other stevedoring companies in the port (intraport transport)

We look for

- CIRCULAR ECONOMY**
- ENERGY TRANSITION**
- SUSTAINABLE DEVELOPMENTS**
- INNOVATIVE SOLUTIONS**
- DIGITALISATION**
- INDUSTRY 4.0**

- ▶ Innovative, industrial activities
- ▶ Employment
- ▶ Added value
- ▶ Reinforcement and diversification of current industrial cluster
- ▶ Optimal modal shift

Our timing

Terms and conditions of the procedure:
www.portofantwerp.com/en/Churchill-Industrial-Zone

[www.portofantwerp.com/en/
Churchill-Industrial-Zone](http://www.portofantwerp.com/en/Churchill-Industrial-Zone)

Contact

**ANTWERP PORT
AUTHORITY**

Port House

Zaha Hadidplein 1
2030 Antwerp
Belgium
T + 32 3 205 20 18
investmentpolicy@portofantwerp.com



**Senior consultant
investment policy**

Isabelle Van Looy
T +32 3 229 67 97
E isabelle.vanlooy@portofantwerp.com