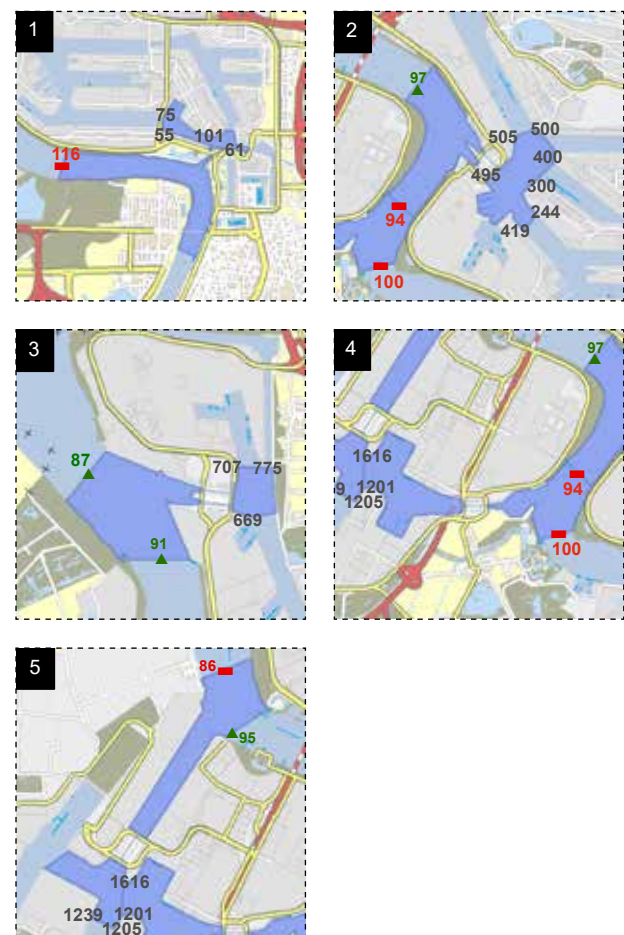


Communication channels

Port of Antwerp ensures safe and efficient traffic control for barges. For ease of communication, below is a list of the VHF channels and telephone numbers.

PORT IN GENERAL	VHF CHANNEL
General navigation channel	74
Antwerp Coordination Center (special shipping notification)	18
Dockmaster quay 602 (berth info)	63
CHECKING IN & OUT OF PORT AREA	
Scheldt-Rhine canal (Noordland bridge)	2
Straatsburg dock	20
America dock, from or to the Stadshaven (City dock)	20
MOORING & UNMOORING	
Scheldt North reporting point: on the Scheldt beneath the lock Royerssluis, at the Scheldt jetties, in the Deurganck dock, at the Noordzee & Europa terminals	2
Docks reporting point: all berths Right & Left bank areas	60
Scheldt quays South of the lock Royerssluis	22
Petroleum installations (Scheldt)	22
BRIDGES	
All bridges	62
LOCKS	
1 Royerssluis T +32 3 229 72 51	22
2 Boudewijnsluis T +32 3 229 71 47 or 46 Van Cauwelaertsluis T +32 3 229 71 47 or 46	71
3 Berendrechtsluis T +32 3 229 71 40 or 41 Zandvlietsluis T +32 3 229 71 40 or 41	79
4 Kallosluis T +32 3 229 71 31 or 32	28
5 Kieldrechtsluis T +32 3 229 74 70 of 71	1



More info
Department Vessel Traffic Management
E cmk@portofantwerp.com
Further up-to-date information can be found at www.portofantwerp.com/en/services-and-info

Waste parks & bilge boat

Port of Antwerp provides various facilities to ensure sustainable and efficient collection of ship's waste from barges. There are three fixed waste collection parks at various points in the port, and on the Right bank it is also possible to make use of the bilge boat.

WASTE PARKS

- Right bank**
- Quay 75 – Noordkasteel park
 - Quay 601 – Lillo park
- Left bank**
- Quay 1552 – Kallo park

BILGE BOAT

T +32 3 229 73 33
(VHF channel 82)

More info

www.portofantwerp.com/en/my-poa/services/waste-collection-centre-barges
www.portofantwerp.com/en/my-poa/services/bilge-water-collection

Drinking water points & drinking water boat

Port of Antwerp makes drinking water available to barge operators at various fixed points around the port. There are also drinking water boats that deliver on request.

FIXED DRINKING WATER POINTS

Right bank

- Quay 75 at mooring post 109
- Quay 75 at mooring post 119
- Quay 601 – Lillo park

Left bank

- Quay 1552 Kallo park service quay

DRINKING WATER BOAT

- South of the Boudewijnsluis lock
T +32 477 214 403
- North of the Boudewijnsluis lock
T +32 477 214 404
- Left bank
T +32 477 214 405

More info

www.portofantwerp.com/en/my-poa/services/drinking-water

Onshore power supply

A uniform system of onshore power supply points for barges in Flanders has been developed in collaboration with other partners. At the moment there are two onshore power locations managed by Port of Antwerp.

WACHTDOK DER LICHTERS (BARGE HOLDING DOCK), NOORDKASTEEL

- 7 distribution boxes (max. 63A) for barges at quay 75
- 2 distribution boxes (max. 125A) for tanker barges at quay 85-87

KATTENDIJK DOK-WESTKAAI

- 3 distribution boxes (max. 400A) for river cruises at quays 15 & 16

Register to use the power points at www.portofantwerp.com/en/onshorepower. You can then make use of this service for a price of 0.27 €/kWh.

Another onshore power location will be added at the end of 2019:

- 15 distribution boxes each with 2 connection points (max. 63A), at De Zouten, Kanaaldok B2

The onshore power locations at Kattendijkdok-Oostkaai, Asiadok and Willemdok are managed by the City of Antwerp. Payments cards are available from: Stadhavendienst, Droogdokkenweg 4 - Haven 18, 2030 Antwerp, T +32 3 338 93 14

More info

www.portofantwerp.com/walstroom

The most up to date information concerning onshore power, waste collection and drinking water for barges in Flanders can be found at www.binnenvaartservices.be. Here you can consult the availability of the onshore power connection points in real time.

Communication & services for barges



Port of
Antwerp

Contact

Antwerp Port Authority
Zaha Hadidplein 1
2030 Antwerp
T +32 3 205 20 11
Department Mobility
E inlandnavigation@portofantwerp.com



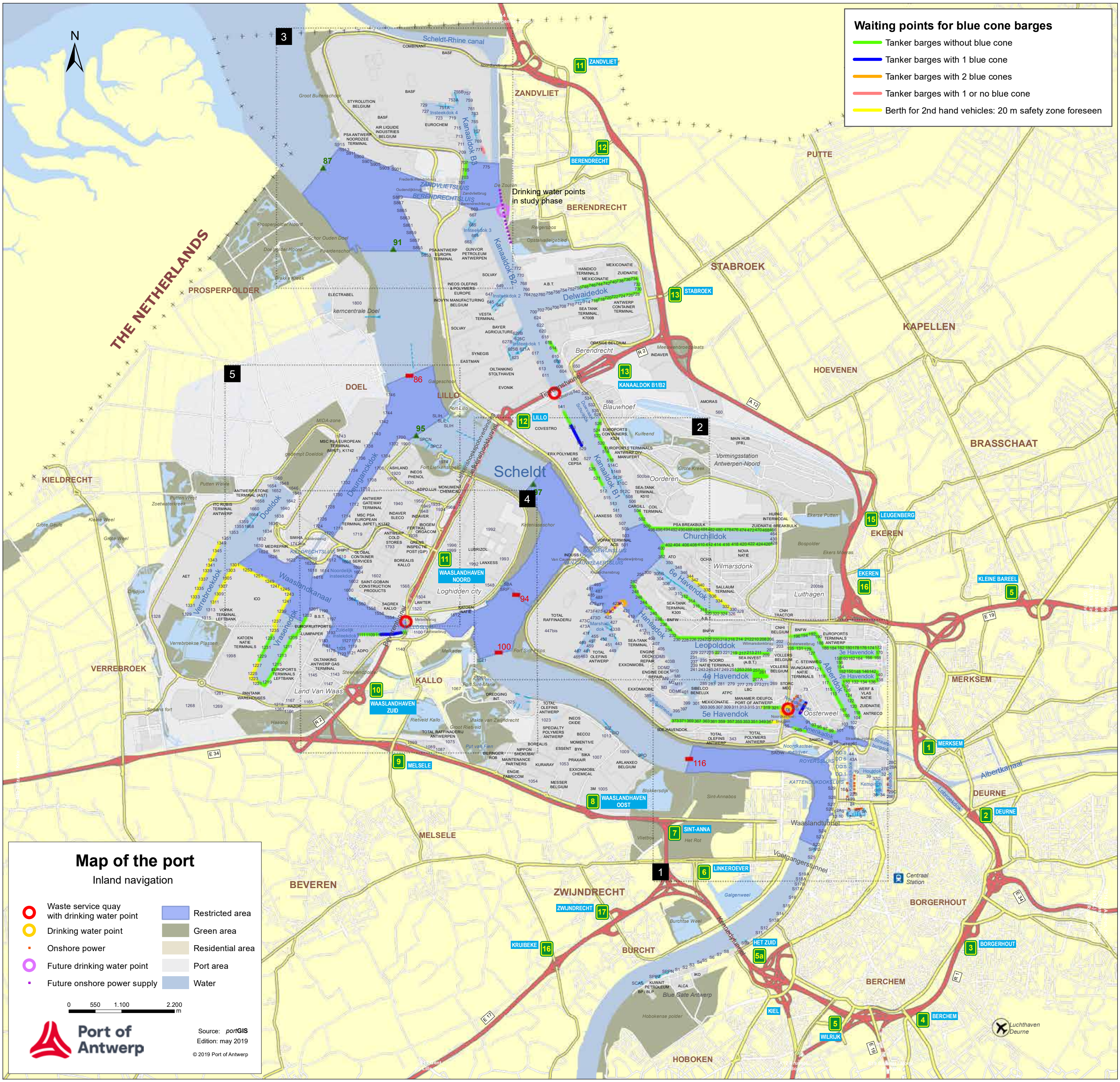
Port of
Antwerp

Stay informed!

Operational Newsletter Inland Navigation
Register at www.portofantwerp.com/en/newsletter-inland-navigation

Waiting points for blue cone barges

- Tanker barges without blue cone
- Tanker barges with 1 blue cone
- Tanker barges with 2 blue cones
- Tanker barges with 1 or no blue cone
- Berth for 2nd hand vehicles: 20 m safety zone foreseen



Map of the port

Inland navigation

○ Waste service quay with drinking water point	■ Restricted area
○ Drinking water point	■ Green area
■ Onshore power	■ Residential area
○ Future drinking water point	■ Port area
■ Future onshore power supply	■ Water

0 550 1.100 2.200 m

Port of Antwerp

Source: portGIS
Edition: may 2019
© 2019 Port of Antwerp

